

Example of the LaTeX-input and output of an annotated chess game using `skak.sty`

Torben Hoffmann

July 21, 2004

1 The Input

```
\fenboard{1q3kr1/3rb2p/p3Q3/8/%  
1p6/8/PPP3PP/4R2K w - - 0 26}
```

```
\begin{figure}[htbp]
```

```
\begin{center}
```

```
$$\showboard$$
```

```
\caption{Fischer--Tal after \protect\variation{25... Kf8!}}
```

```
\label{fig:after-25...Kf8}
```

```
\end{center}
```

```
\end{figure}
```

(See figure~\ref{fig:after-25...Kf8}.)

```
\mainline{26. Qxd7}
```

```
Not \variation{26. Rf1+ Kg7 27. Rf7+  
Kh8}
```

```
and if \variation{28. Qxd7 Rd8 29. Qg4  
Qe5}
```

```
wins.
```

```
\mainline{26...Qd6 27. Qb7 Rg6}
```

Within a handful of moves the game has changed its complexion. Now it is White who must fight for a draw!

```
\mainline{28. c3}
```

Black's extra piece means less with each pawn that's exchanged.

```
\mainline{28...a5}
```

```
On \variation{28...bxc3 29. Qc8+ Bd8  
30. Qxc3}=.
```

```
\variation{25... Kf8!}
```

```
\mainline{29. Qc8+}
```

```
On the wrong track. Right is  
\variation{29. cxb4 Qxb4} (if  
\variation{29... axb4 30. a3! bxa3  
31. bxa3 Qxa3} draws)
```

```
\variation{30. Qf3+ Kg7 31. Qe2} draws,  
since Black can't possibly build up a  
winning K-side attack and his own  
king is too exposed.
```

```
\mainline{29...Kg7 30. Qc4 Bd8}
```

```
31. cxb4 axb4}
```

```
On \variation{31... Qxb4 32. Qe2}  
White should draw with best play.
```

```
$$\showboard$$
```

2 The Output

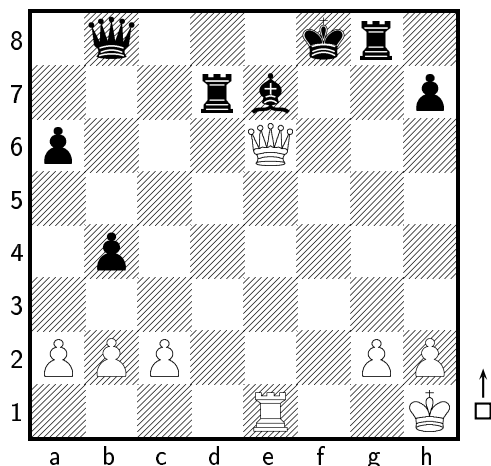


Figure 1: Fischer–Tal after 25... ♔f8!

(See figure ??.)

26 ♚×d7

Not 26 ♜f1+ ♔g7 27 ♜f7+ ♔h8 and if 28 ♚×d7 ♜d8 29 ♚g4 ♚e5 wins.

26 ... ♚d6
27 ♚b7 ♜g6

Within a handful of moves the game has changed its complexion. Now it is White who must fight for a draw!

28 c3

Black's extra piece means less with each pawn that's exchanged.

28 ... a5

On 28... b×c3 29 ♚c8+ ♜d8 30 ♚×c3=.

29 ♚c8+

On the wrong track. Right is 29 c×b4 ♚×b4 (if 29... a×b4 30 a3! b×a3 31 b×a3 ♚×a3 draws) 30 ♚f3+ ♔g7 31 ♚e2 draws, since Black can't possibly build up a winning K-side attack and his own king is too exposed.

29 ... ♔g7
30 ♚c4 ♜d8
31 c×b4 a×b4

On 31... ♚×b4 32 ♚e2 White should draw with best play.

