

# Typesetting Chess in L<sup>A</sup>T<sub>E</sub>X with the **skak** Package

## Version 1.4

Torben Hoffmann  
e-mail: [Torben.Hoffmann@motorola.com](mailto:Torben.Hoffmann@motorola.com)

March 19, 2006

### **Abstract**

This user guide shows how to use an enhancement to the existing package for typesetting chess in L<sup>A</sup>T<sub>E</sub>X(**skak**). The primary improvement over the old package is that it has become easier to typeset chess games with this new package.

# Contents

<b>1</b>	<b>Terms of Usage</b>	<b>3</b>
<b>2</b>	<b>Acknowledgements</b>	<b>3</b>
<b>3</b>	<b>Installing the skak Package</b>	<b>3</b>
3.1	Using the lambda Package . . . . .	4
<b>4</b>	<b>Basic usage of the skak package</b>	<b>4</b>
<b>5</b>	<b>Intermediate Usage of the skak Package</b>	<b>5</b>
5.1	Game Management . . . . .	5
<b>6</b>	<b>Ornaments</b>	<b>7</b>
6.1	Showing the Board . . . . .	7
6.2	Handy Commands . . . . .	9
<b>7</b>	<b>Advanced Usage</b>	<b>9</b>
7.1	Tailoring of the Board Appearance . . . . .	9
7.2	Setting up the Board . . . . .	11
7.3	Typesetting Style . . . . .	12
7.3.1	<code>\styleA</code> . . . . .	12
7.3.2	<code>\styleB</code> . . . . .	12
7.3.3	<code>\styleC</code> . . . . .	12
7.3.4	<code>\variationstyle</code> and <code>\mainlinestyle</code> . . . . .	13
7.3.5	<code>\longmoves</code> and <code>\sanmoves</code> . . . . .	13
7.4	Input Language . . . . .	13

## 1 Terms of Usage

This package is distributed under the terms described in the Latex Project Public Licence, i.e.,

This software is copyright but you are granted a license which gives you, the “user” of the software, legal permission to copy, distribute, and/or modify the software. However, if you modify the software and then distribute it (even just locally) you must change the name of the software to avoid confusion.

## 2 Acknowledgements

I would like to thank the creator of the `lambda` package, Alan Jeffrey, for making a splendid package that made this package possible.

For discussions and alpha-testing I send my thanks to Guido Governatori — some of his ideas have already been implemented; the rest? Time will show.

Thanks to Harri Haanpaa for finding a nasty bug in the `castling` routine.

A big thank goes to Dirk Bächle for adding the Informator symbols to the fonts and for removing a couple of nasty bugs as well as improving some of the commands.

I thank Ulrike Fischer for the tremendous work she has done with regards to improving the way fonts are handled by the `skak` package, not to mention the significant amount of bugs she has found and in many cases fixed.

## 3 Installing the skak Package

I could not get the makefile to do the job, so if someone could help me out on this I would be very glad indeed.

Basically all you have to do is to follow the guidelines in the makefile. First you create all the required directories (stated in the `install` section of the makefile) and then you run the `make install` command. Remember to run `texhash` after you have updated your `texmf` tree.

Sorry that it is not working 100%— I just do not have the time for it right now.

If you cannot get the things working just put the files where  $\TeX$  and the other tools can find them and you will be just fine.

For Windows user I can recommend the MikTeX installation since it has `skak` as a package and all you have to do is to use the MikTeX installation tools and select installation of `skak` and you're up and running.

Ultimately the `skak` package should be documented using the  $\LaTeX$  standard documentation, but that is a major undertaking that will not happen right now.

### 3.1 Using the lambda Package

The `skak` package uses the `lambda` package to do some of the hard processing necessary to allow the PGN notation as input — since it is not standard in  $\LaTeX$  distributions it is included in the distribution of the `skak` package.

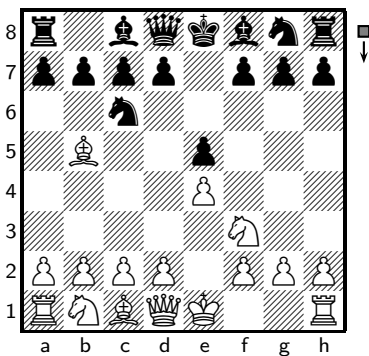
## 4 Basic usage of the `skak` package

Once the `skak` package has been installed you only need to know very few things in order to produce nicely typeset chess games:

- write `\usepackage{skak}` in the preamble.
- the `\newgame` command.
- the `\mainline` command.
- the `\variation` command.
- the `\showboard` command.

As an example I will describe some moves from the Ruy Lopez opening — please note that the comments are just idle talk. In the left column the input is shown and the corresponding output is shown in the right column.

1 e4 e5 2  $\mathring{N}$ f3  $\mathring{N}$ c6 3  $\mathring{B}$ b5



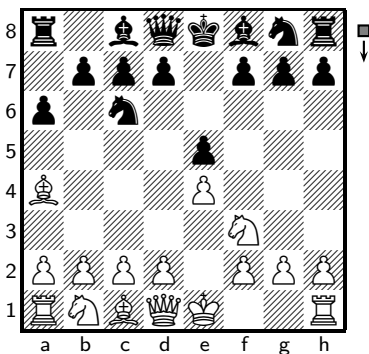
```
\newgame
\mainline{1.e4 e5 2. Nf3 Nc6 3.Bb5}
\showboard
```

The `\newgame` command sets up the internal board for a new game. The `\mainline` command does two things: it typesets the moves and updates the board so that `\showboard` will show the current board position.

### 3... a6

Rarely used these days,  
3... ♖f6 is more in  
fashion since blah blah...

### 4 ♙a4



```
\mainline{3...a6}
Rarely used these days,
\variation{3...Nf6} is more in
fashion since blah blah...
\mainline{4.Ba4}

\showboard
```

This example shows that if it is black to move the move number should be followed by three periods. Furthermore, it also shows that the `\variation` command merely typesets the moves — it does *not* update the board, but apart from that it expects the same input as `\mainline`.

The four commands introduced in this section will enable you to comment your games with minimal effort and still get great results — in fact most chess books can be written using only these commands!

But the `skak` package offers a lot more that can make chess typesetting easier for your — these features are the topics of the next two sections.

## 5 Intermediate Usage of the `skak` Package

This section describes how to

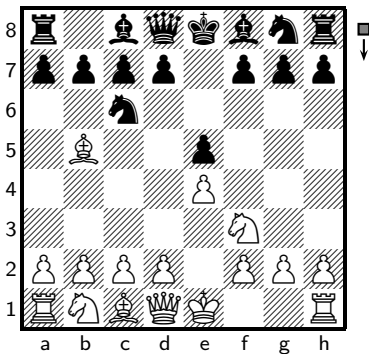
- do game management,
- add ornaments to the board and
- controlling some aspects of showing the board.

### 5.1 Game Management

Returning to the Ruy Lopez example suppose you want to go into details about a number of variations after white's third move, preferably showing the board in all the lines you describe.

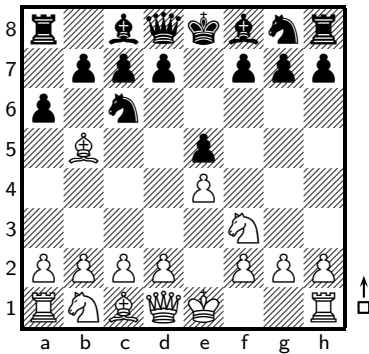
One way to do this is to use the `\hidemoves` command like this:

1 e4 e5 2 ♘f3 ♘c6 3 ♙b5



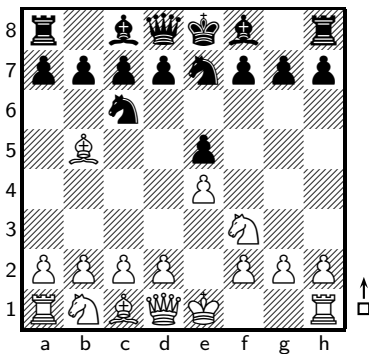
```
\newgame
\mainline{1.e4 e5 2. Nf3 Nc6 3.Bb5}
\showboard
```

3... a6 blah blah



```
\mainline{3...a6} blah blah
\showboard
```

3... ♘ge7 blah blah



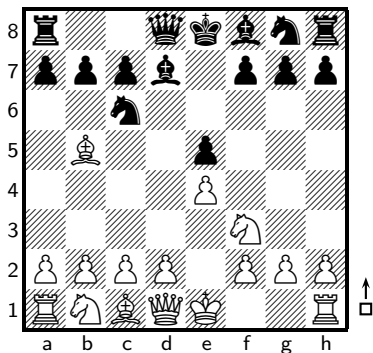
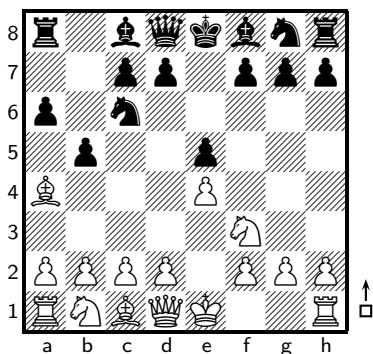
```
\newgame
\hidemoves{1.e4 e5 2. Nf3 Nc6 3.Bb5}
\mainline{3...Nge7} blah blah
\showboard
```

This is, admittedly, a labourious way of doing it, but the example shows how `\hidemoves` can fast-forward you to any point in a game.  
 skak offers you ways of storing game positions

- in memory or
- in a file.

The former is done using the `\storegame` and `\restoregame` commands like this:

1 e4 e5 2 Nf3 Nc6 3 Bb5  
3... a6 4 Ba4 b5



```
\newgame
\mainline{1.e4 e5 2. Nf3 Nc6 3.Bb5}
\storegame{game1}
\mainline{3...a6 4.Ba4 b5}

\showboard
\restoregame{game1}

\mainline{3...Bd7}
\showboard
```

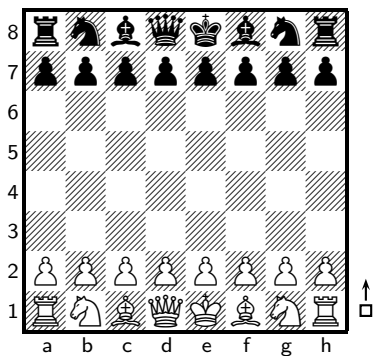
Saving and loading to/from a file is the same just with the commands `\savegame` and `\loadgame`.

## 6 Ornaments

### 6.1 Showing the Board

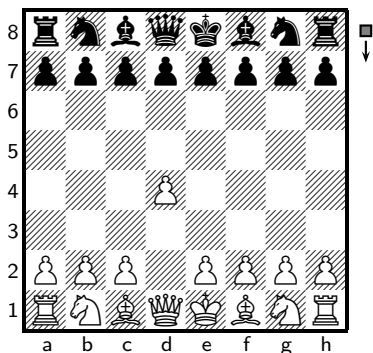
We have already seen `\showboard` in action, but it is possible to alter the way the board looks like.

With the `\mover` command one can request that a little marker is shown next to the board indicating who is to move next.



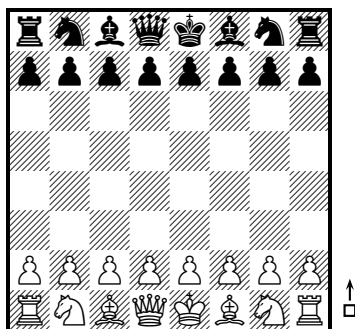
```
\newgame
\showboard
```

1 d4



```
\mainline{1.d4}
\showboard
```

This can be turned off with `\moveroff`. You can also remove the notation around the board using `\notationoff` which gives this appearance:



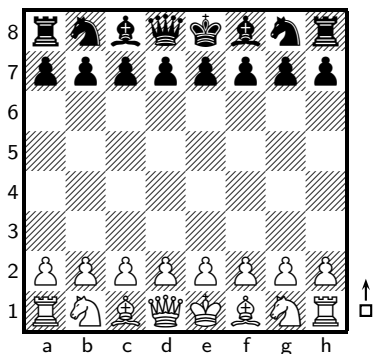
```
\newgame
\notationoff
\showboard
```

The notation is added again after one has issued `\notationon`.

A more elaborate explanation of how the appearance of the notation around the board is configured can be found in [?].

Although it is rarely seen is chess books skak offers the possibility of showing the board from black's perspective using the `\showinverseboard` command.





```
\newgame
\showboard
```

If you are writing about an opening from black's point of view this command/feature could be a welcome refreshment in presentation style.

## 6.2 Handy Commands

By request of users and own usage a couple of handy commands have been added to `skak` that you might find useful too.

`\wmove{move}` typesets a single move, whereas `\bmove{move}` does the same only with leading ellipses (see 7 for in-depth explanation). This is useful for short remarks like:

... ♖d4 would have been better.

```
\bmove{Nd4} would have been better.
```

`\lastmove` is a shorthand for commenting on the last move made:

**1 a3**  
1 a3 is bad.

```
\newgame
\mainline{1. a3}
\lastmove{} is bad.
```

## 7 Advanced Usage

This section will describe some features of the `skak` package that allows you to control a lot with regards to the typesetting of moves as well as how the board is shown.

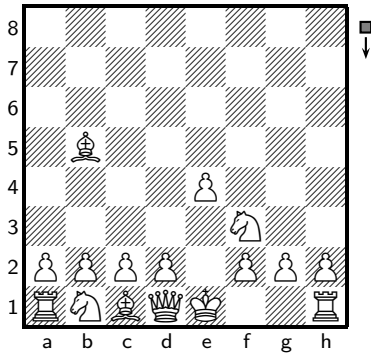
Furthermore, we will take a look at how the board is set up in arbitrary positions and how the input language can be changed.

### 7.1 Tailoring of the Board Appearance

In addition to the ornaments and showing the board upside down described in 5 one can choose to show only a subset of the pieces actually on the board.

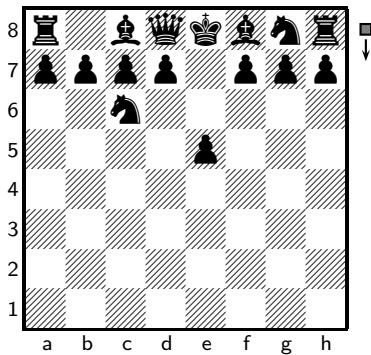
The simple commands `\showonlywhite` and `\showonlyblack` shows only one colour on the board:

1 e4 e5 2 Nf3 Nc6 3 Bb5



```
\newgame
\mainline{1.e4 e5 2. Nf3 Nc6 3.Bb5}

\showonlywhite
\showboard
```

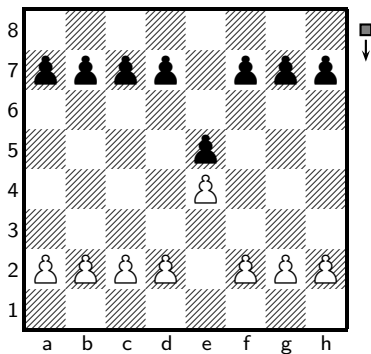


```
\showonlyblack
\showboard
```

This is often used when describing openings where one wants to focus on the merits of the piece set-up on one side without considering how the other side is positioned.

In addition to the commands for showing only one colour it is also possible to show any subset of the pieces on the board using the `\showonly` command that takes a comma separated list of piece names as argument:

The pawn structure is now like this:

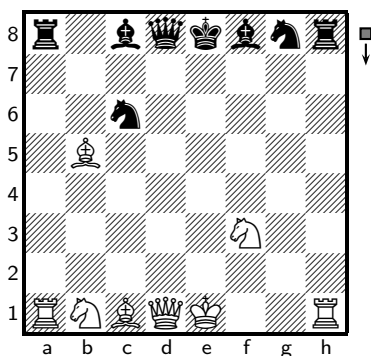


```
The pawn structure is
now like this:

\showonly{P,p}
\showboard
```

The piece names are the standard English name with the addition that white pieces are denoted by upper case and black's by lowercase. Pawns are P and p.

It is also possible to do the opposite of `\showonly` using `\showallbut`:



```
\showallbut{P,p}
\showboard
```

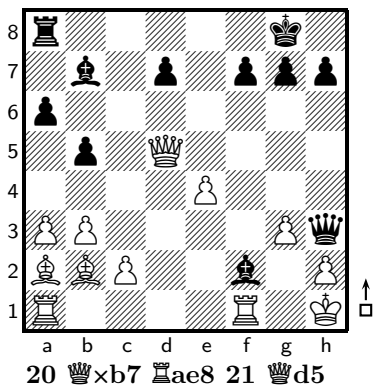
## 7.2 Setting up the Board

So far we have only looked how to start a new game, but you can also set up the board in *any* position using the command `\fenboard`:

Forsyth-Edwards Notation (FEN) is a standard used to describe chess positions. It starts with a description of the contents of the ranks on the board. The ranks are separated by a slash starting with the eighth row, so if you want to write down the FEN of a position you should be seated as white and work your way down the board. The pieces are designated using the standard English piece names.

After the position of the pieces the following information is given separated by spaces:

- who it is to move (w or b).
- castling options left for white. - for none, and K and Q for options to castle kingside or queenside for white and k and q for black
- en passant square, if applicable otherwise a -.
- number of halfmoves since the last capture.
- the move number.



```
\fenboard{r5k1/1b1p1ppp/p7/1p1Q4/
2p1r3/PP4Pq/BBP2b1P/R4R1K w - - 0 20}

\mbox{}
\bigskip

\showboard

\mainline{20.Qxb7 Rae8 21.Qd5}
```

### 7.3 Typesetting Style

There are a couple of ways to configure how the move are typeset as described in the following.

#### 7.3.1 `\styleA`

The `\styleA` will switch the typesetting to the way it has been the standard in Denmark and — I believe — Germany.

1. e4, c5 2. ♘f3, ♘c6

```
\newgame
\styleA

\mainline{1.e4 c5 2.Nf3 Nc6}
```

#### 7.3.2 `\styleB`

The style selected by `\styleB` is the default one.

1 e4 c5 2 ♘f3 ♘c6

```
\newgame
\styleB

\mainline{1.e4 c5 2.Nf3 Nc6}
```

#### 7.3.3 `\styleC`

The style selected by `\styleC` is an elaboration on `\styleB`: it typesets the moves line by line for each move for the mainline but on the same line for variations — this style is used in many books these days, but look the best in a two-column setting where the linewidth is small.

```

1      e4      c5
2      ♘f3     ♘c6

```

Interesting how 2...d6 is blah blah.

```

\newgame
\styleC

\mainline{1.e4 c5 2.Nf3 Nc6}

Interesting how \variation{2...d6} is
blah blah.

```

### 7.3.4 `\variationstyle` and `\mainlinestyle`

Configuration of these commands allows for total control of the typesetting of the mainline and variations, they default to:

```

\def\mainlinestyle{\bfseries}% could also contain
                                % definitions of the
                                % various style options
\def\variationstyle{}% as with mainlinestyle

```

They are used by `\styleC` to control the switching back and forth between a tabbed environment and normal typesetting:

```

\def\mainlinestyle{\styleC\bfseries}
\def\variationstyle{\styleB}

```

### 7.3.5 `\longmoves` and `\sanmoves`

The `\longmoves` command will ensure that the full move, i.e., including the from square is typeset. This is also know as *algebraic* notation — can be quite handy when writing about chess for children or other newcomers to chess notation.

```

1 e7-e4 c2-c5 2 ♘g1-f3 ♘b8-c6

```

```

\newgame
\longmoves

\mainline{1.e4 c5 2.Nf3 Nc6}

```

The `\shortmoves` command returns things to normal.

## 7.4 Input Language

The `skak` package by default uses the English letters for the pieces, i.e., K for King, Q for Queen, R for Rook, B for Bishop, N for Knight and P for Pawn.

The `\newskaklanguage` command makes it possible to define other languages than English, e.g., suppose I want to use the Danish piece letters:

```

1 e4 c5 2 ♘f3 ♘c6

```

```

\newskaklanguage{danish}{KDTLSB}

\skaklanguage [danish]

\newgame
\mainline{1.e4 c5 2.Sf3 Sc6}

```